

CANYONING PARK

AMUSEMENT LOGIC WORLDWIDE LLC.

80 Broad Street, 5th floor, 10004, New York (USA)

info@amusementlogic.es / www.amusementlogic.com





Year through operation artificial canyoning circuit which recreates the action and adventure of this mountain sport, in a realistic and natural environment with the following main activities:

- Winding course with different degrees of difficulty.
- Jumps into the water from 3m to 10m (it has 11 pools elevated at different heights).
- Rocky slides.
- Abseiling descents under waterfalls.
- Climbing areas with ropes and ladders.
- Jump into an underground river in a grotto from 6m in height in total darkness.
- Zipwire which finishes in water.
- Swimming pools and spas areas for relaxation after the course.

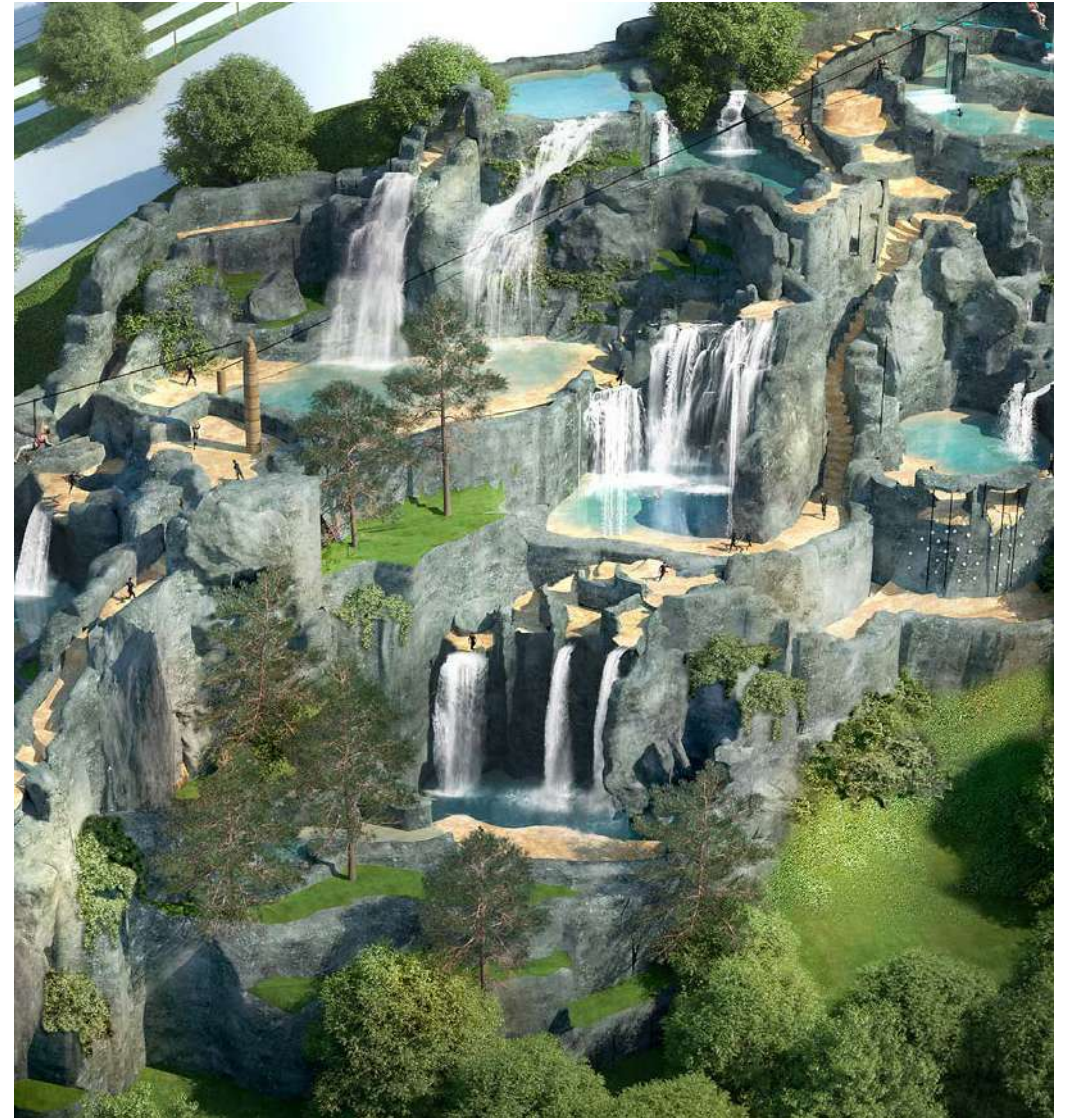


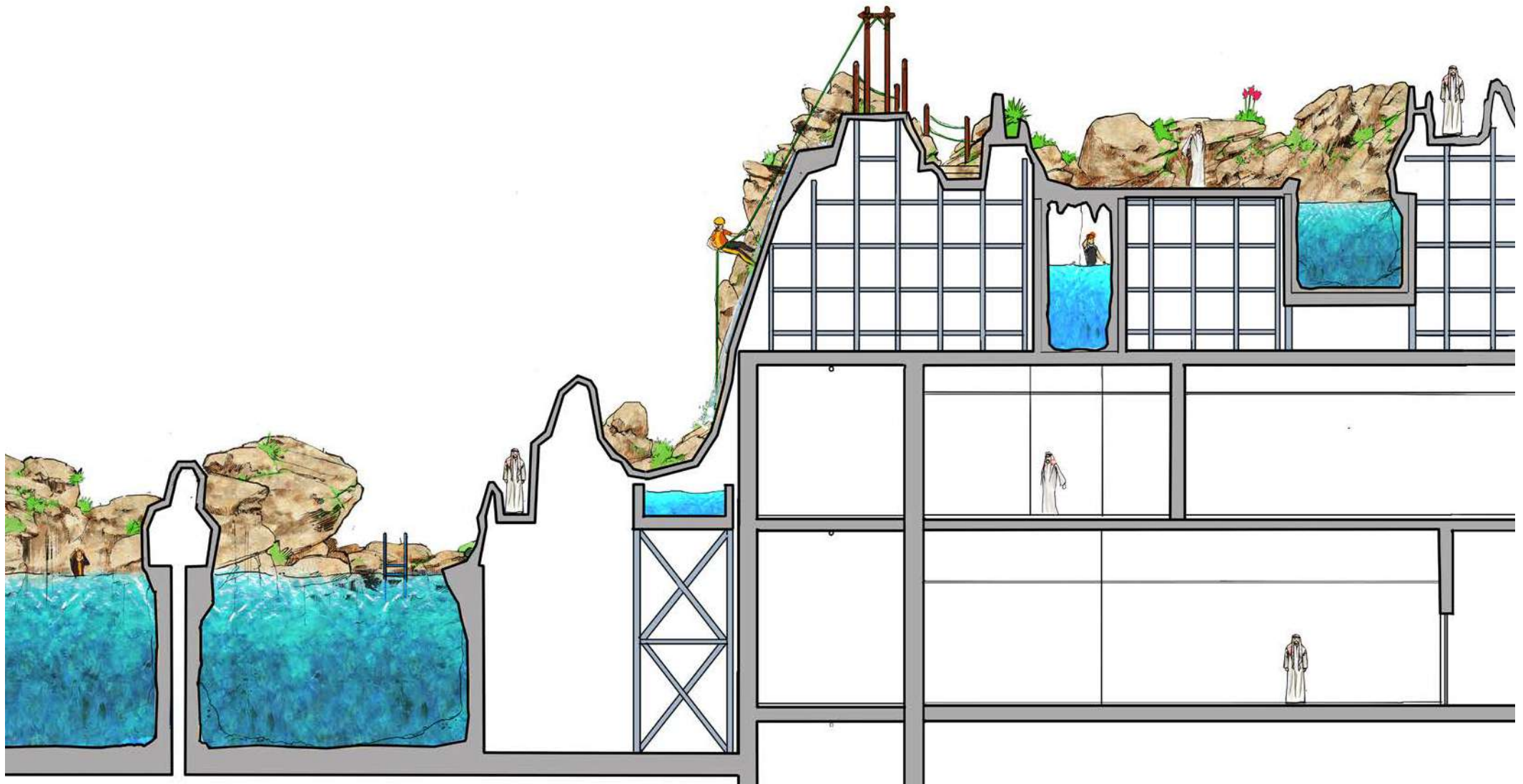
CANYONING PARK

(THESE DRAWINGS AND SPECIFICATIONS ARE PROPERTY AND COPYRIGHT OF AMUSEMENT LOGIC WORLDWIDE LLC. AND CANNOT BE USED IN ANY OTHER PROJECT EXCEPT WITH PREVIOUS WRITTEN AGREEMENT WITH AMUSEMENT LOGIC WORLDWIDE LLC.)

This product is offered on a turn key basis including:

- Construction of the circuit with artificial gunited rocks
- Supply and installation of pools
- Galvanized metallic support structures
- Complete filtration and pumping system
- Supply and installation of equipment for the climbing and descent areas
- Supply of individual equipment (wetsuits, safety harnesses, helmets and boots)
- Construction of swimming pool and spas in the relaxation area
- Construction of a cafeteria-restaurant
- Construction of toilets and changing rooms
- Construction of a kid's games area for children under eight years old
- Illumination for night time use
- Safety chambers in all of the course
- Construction of a parking area
- Adaptable to any terrain





C A N Y O N I N G P A R K

(THESE DRAWINGS AND SPECIFICATIONS ARE PROPERTY AND COPYRIGHT OF AMUSEMENT LOGIC WORLDWIDE LLC. AND CANNOT BE USED IN ANY OTHER PROJECT EXCEPT WITH PREVIOUS WRITTEN AGREEMENT WITH AMUSEMENT LOGIC WORLDWIDE LLC.)



CANYONING PARK

(THESE DRAWINGS AND SPECIFICATIONS ARE PROPERTY AND COPYRIGHT OF AMUSEMENT LOGIC WORLDWIDE LLC. AND CANNOT BE USED IN ANY OTHER PROJECT EXCEPT WITH PREVIOUS WRITTEN AGREEMENT WITH AMUSEMENT LOGIC WORLDWIDE LLC.)



CANYONING PARK

(THESE DRAWINGS AND SPECIFICATIONS ARE PROPERTY AND COPYRIGHT OF AMUSEMENT LOGIC WORLDWIDE LLC. AND CANNOT BE USED IN ANY OTHER PROJECT EXCEPT WITH PREVIOUS WRITTEN AGREEMENT WITH AMUSEMENT LOGIC WORLDWIDE LLC.)



CANYONING PARK

(THESE DRAWINGS AND SPECIFICATIONS ARE PROPERTY AND COPYRIGHT OF AMUSEMENT LOGIC WORLDWIDE LLC. AND CANNOT BE USED IN ANY OTHER PROJECT EXCEPT WITH PREVIOUS WRITTEN AGREEMENT WITH AMUSEMENT LOGIC WORLDWIDE LLC.)



CANYONING PARK

(THESE DRAWINGS AND SPECIFICATIONS ARE PROPERTY AND COPYRIGHT OF AMUSEMENT LOGIC WORLDWIDE LLC. AND CANNOT BE USED IN ANY OTHER PROJECT EXCEPT WITH PREVIOUS WRITTEN AGREEMENT WITH AMUSEMENT LOGIC WORLDWIDE LLC.)



CANYONING PARK

(THESE DRAWINGS AND SPECIFICATIONS ARE PROPERTY AND COPYRIGHT OF AMUSEMENT LOGIC WORLDWIDE LLC. AND CANNOT BE USED IN ANY OTHER PROJECT EXCEPT WITH PREVIOUS WRITTEN AGREEMENT WITH AMUSEMENT LOGIC WORLDWIDE LLC.)



CANYONING PARK

(THESE DRAWINGS AND SPECIFICATIONS ARE PROPERTY AND COPYRIGHT OF AMUSEMENT LOGIC WORLDWIDE LLC. AND CANNOT BE USED IN ANY OTHER PROJECT EXCEPT WITH PREVIOUS WRITTEN AGREEMENT WITH AMUSEMENT LOGIC WORLDWIDE LLC.)

C A N Y O N I N G ' S P R E S E N T A T I O N

A M U S E M E N T L O G I C W O R L D W I D E L L C .

AMUSEMENT LOGIC WORLDWIDE LLC.

80 Broad Street, 5th floor, 10004, New York (USA)

info@amusementlogic.es / www.amusementlogic.com