



SURF SIMULATOR

“SURF RIDER”



The “SURF RIDER” surf ride simulator from Amusement Logic Worldwide LLC is an exciting attraction that produces a static wave for practicing body boarding and surfing. Given the compact size and modular nature of this ride, it's perfect for installing in existing centres or new facilities. It provides a fantastic surfing experience and is ideal for all types of user, whatever their age or ability in this sport. It can be enjoyed by everyone, from beginners with their boogies to surfing pros.

The Surf Rider is a static wave ride, with a high-speed laminar water flow and a depth of 7 to 10 centimetres.

The Surf Rider allows the creation of the perfect wave to practice body / boogie boarding and surfing, in maximum safety, thanks to its integral cushioned covering. Fun is maximised thanks to its large surfing surface area.



Water is supplied to the Surf Rider through high-flow submersible pumps and it can be controlled via a flow-speed variation system, allowing the power to be regulated and therefore the wave. This possibility for adjustment allows the Surf Rider to be used in different ways: from teaching body boarding to youngsters, to surfing and even surfing competitions.



ADVANTAGES OF THE SURF RIDER

- The Surf Rider covers a gap in the market for surf simulators: it offers an attraction capable of producing a stable, static and safe wave as the wave's support surface is formed by a flexible layer of GRP, ensuring wave shape without any maintenance and providing excellent absorption for falls or possible impacts.
- The Surf Rider is installed on a hollow concrete structure, which allows cost reductions and even the re-use of existing swimming pools and facilities.
- The Surf Rider allows a wide range of surfing-related activities to be carried out, such as surfing, body / boogie boarding or riding on floats.
- The speed of the wave can be adjusted from the control panel, in a range between 5 and 8 m per second.
- The Surf Rider can be easily integrated into a lazy river system and can be designed to provide both the static wave and the movement of the river.
- The Surf Rider can be supplied with a support bar for surfers' training, which allows new surfers to familiarize themselves with their boards and improve their balance and control of the boards in a controlled environment. There is also an option of installing stainless-steel perimeter railings.

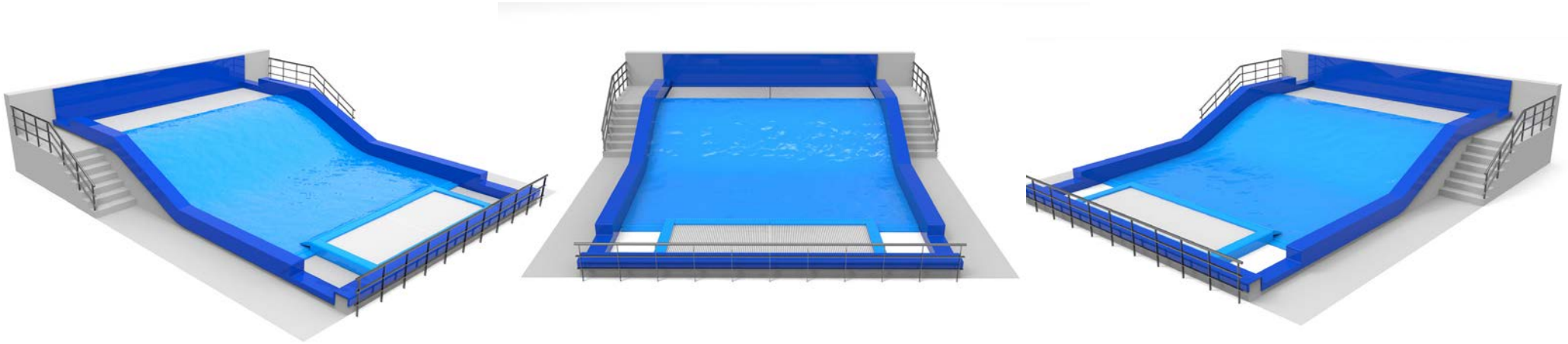


- The Surf Rider can be supplied turnkey, including the filtration and chemical water treatment systems.
- The Surf Rider is manufactured entirely with suitable materials that guarantee its longevity in an aquatic environment and with low maintenance.
- The power consumption can be adjusted to suit the operating conditions.
- There are two available models; the single 12 x 5 m, and the double 12 x 7.5 m. The latter can be fitted with a pneumatic separator between both surfing areas.
- The Surf Rider's design allows installation and commissioning times to be drastically reduced.









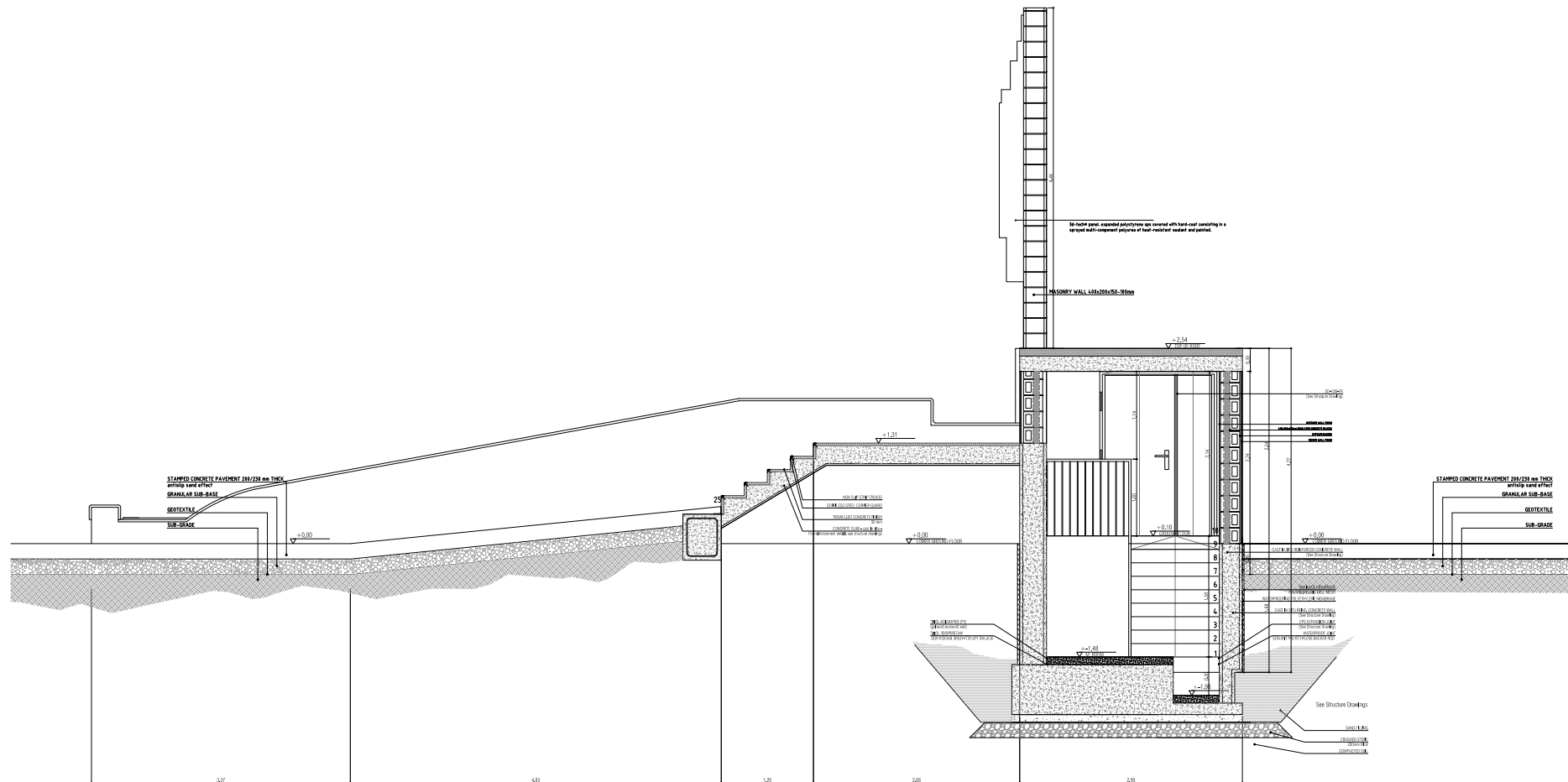
SINGLE MODEL

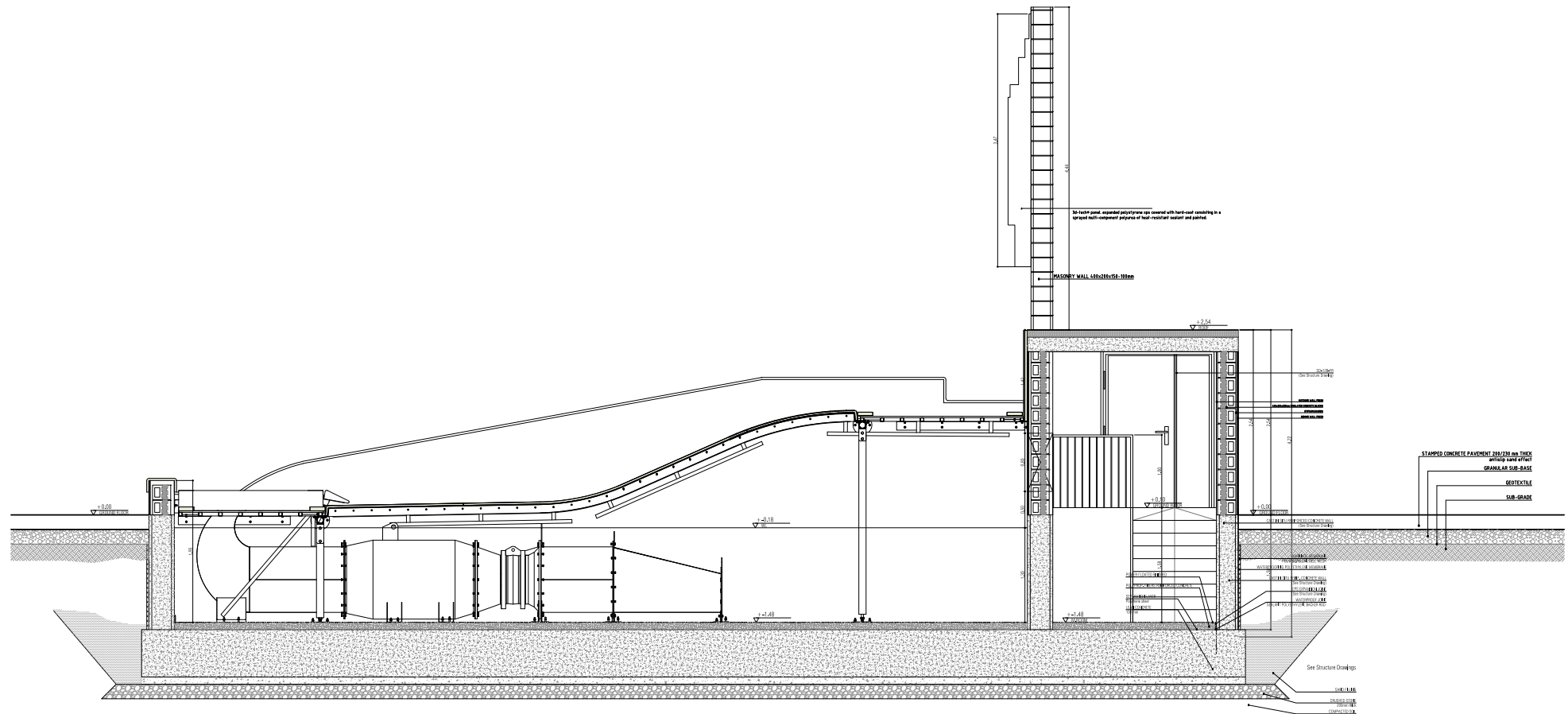
- Interior dimensions:
12 x 5 m
- Water level:
1.5 m
- Minimum depth of the pool basin:
1.85 m
- Pool water volume:
90 m³
- Pump flow:
4,500 m³/h
- Pump power:
110 kW

DOUBLE MODEL

- Interior dimensions:
12 x 7.5 m
- Water level:
1.5 m
- Minimum depth of the pool basin:
1.85 m
- Pool water volume:
135 m³
- Pump flow:
4,500 m³/h x 2
- Pump power:
110 kW x 2

- The surfing surface is made with elastic GRP and covered with a cushioning buffer of 30mm PE foam and double-layer treated PVC, reinforced with polyester mesh.







AMUSEMENT LOGIC WORLDWIDE LLC.
80 Broad Street, 5th floor, 10004, New York (USA)
info@amusementlogic.es / www.amusementlogic.com